

# SUBI CHURCH ANNUAL REPORT 2024

FY 2023/24

## Chairman of the Board of Elders

Dear Subi Church Family,

As I reflect on this past year, I cannot help but see the Lord's abundant grace and His hands working through our church community. Through every challenge and triumph, the Lord has continually spoken to us through His Word, offering hope and encouragement. In His promises, we have found peace and strength, and His faithfulness has never wavered, no matter the circumstances.

One of the most significant milestones this year was the appointment of Ps. David Skirving as our Senior Pastor. I am truly thankful for the unity of this congregation as you came together to affirm this decision through your support and prayers. Since then, Ps. David, alongside the Elders, has diligently worked to build a strong pastoral team that now includes Executive Pastor Ray Forlin and Associate Pastor Braden Fildes. With the pastoral team now in place, we have felt a renewed sense of direction and purpose.

In addition to the pastoral appointments, key ministry leaders have been established to spearhead the various ministries within the church.

We have also instituted a body of deacons to provide additional support as we continue to grow. Moreover, several new committees have been formed, bringing vital subject matter expertise to help enhance the operations of Subi

Church. These committees will play a crucial role in the smooth functioning of the church as we step into the future.

Looking ahead, the Elders have approved a growth budget for the coming year, stepping out in faith as we seek to establish new ministries and expand our staff to cultivate wholehearted followers of Jesus. Our prayer is that this growth will not only increase our capacity to serve but also deepen our dependence on Him. We trust the Lord to continue equipping and empowering us to minister effectively to those who call Subi home. This is your family.

As we continue on this journey, let us fix our eyes on Christ, glorify God, serve His people, and support those in need. Together, we are called to build His kingdom here at Subi, and I believe that with God's grace, we will accomplish the work He has set before us.

In closing, I want to express my heartfelt gratitude to each and every one of you for your dedication, prayers, and unwavering commitment to Subi Church. May we remain joyful in hope, patient in affliction, and faithful in prayer as we move forward.

Your humble servant,



**SEAN KUM**  
CHAIRMAN OF THE  
BOARD OF ELDERS

Each statistic within this report represents dozens of personal stories from within Subi Church - introductions to Jesus at Kids Holiday Club, renewed faith at Youth Camp, deepening relationships in Small Groups, just to name a few examples. Each number represents lives changed for eternity.

# Senior Pastor

In February of this year we had our Subi Church vision weekend. It was an opportunity to look through spiritual binoculars at our future.

We articulated our MVP, our mission/vision/purpose combined into a single overarching statement for simplicity and clarity, which articulates what we as a church exist to do.

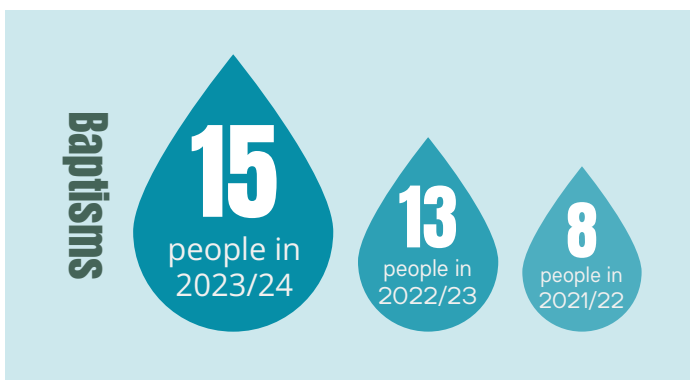
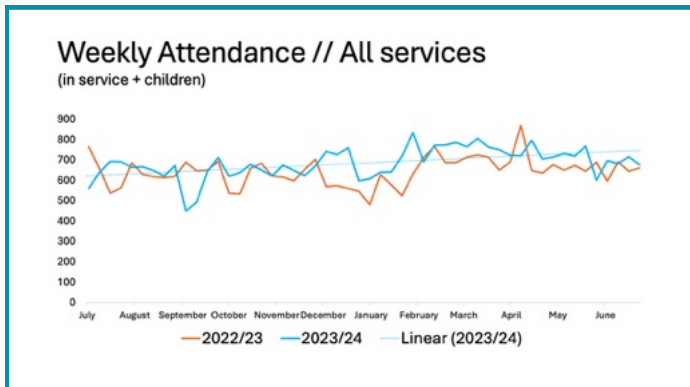
Our MVP is to: *bring in and build up disciples in increasing number.*

**BRING IN AND BUILD UP DISCIPLES IN INCREASING NUMBER**



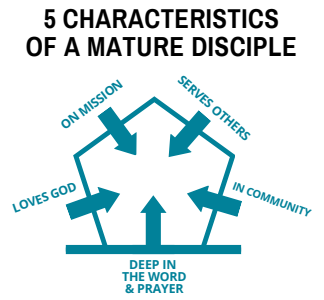
To bring in those who don't know Christ, and build up those who do. We talked about not being on *maintenance* mode, not merely maintaining the status quo. That is a low bar. The bar Jesus sets for us in the Great Commission is much, much higher. He calls us to be on *mission* mode.

What are the indicators of our church's health and growth? I'd like to show you some metrics which provide a snapshot of how the church is tracking.



Nine months in and the trend is upwards, the Lord is working and moving. We are bringing people in.

But we then need to build them up. Build them up to what? To Christian maturity. In the Scriptures we see that mature disciples have 5 characteristics. A mature, fully devoted disciple has all 5 characteristics. Not 3, not 4, all 5. None of the 5 are optional extras.



Our hope is for *every regular church attender to be a member, every member to:*

- Be in a small group
- Be in a serve team
- Be giving generously

Our metrics showed us this:



God asks Christians to give materially to those who feed us spiritually (1 Corinthians 9). A Christian's primary responsibility when it comes to giving is to give to their local church. If a church wants to grow it needs to staff for growth because the kingdom grows through people and gospel proclamation. We have formed a formidable team to equip us to fulfil our mission.

Staffing for growth necessitates that we increase our budget this financial year by 25%, which is equivalent to \$300,000 more than last year. Our giving is currently below budget but we have a strong tradition of being generous givers at Subi Church and I am confident we can turn this around.

We are part of a story that began before us at Subi Church in 1898 and will go on after us, but each of us has an opportunity to influence the outcome. I ask you to come before the Lord about what your partnership in the gospel will look like in 2025.



**DAVID SKIRVING**  
SENIOR PASTOR

# 2023/24 HIGHLIGHTS

# SUBI CHURCH

**687**  **NEW 8% INCREASE**  
**AVERAGE WEEKEND ATTENDANCE** 

**538 first time guests**  
from Jul 2023 to Jun 2024

*“I've never experienced the warmth of Subi Church anywhere else...”*

## Membership



## Child Dedications



**4**

Jul 2023 - Jun 2024

**4**  
**Connect Lunches**

for new guests

**14 + 16 + 13 + 17**

Number of guests



**2**  
**Fellowship Meals**

for the whole church

**593 + 709**

Number of people

**Each of you should use whatever gift you have received to serve others, as faithful stewards of God's grace in its various forms.**

**1 Peter 4:10**

## 50+ Families Supplied with Meals

People who are sick/injured, just recovering from hospitalisation, new mums, the elderly, and many others have been fed through the meals lovingly prepared by volunteers.

## COURSES

Our calling is to: "Equip (God's) people for works of service, so that the body of Christ may be built up until we all reach unity in the faith and in the knowledge of the Son of God and become mature, attaining to the whole measure of the fullness of Christ." Ephesians 2:12-13

## Small Groups

We grow spiritually when we consistently connect with both God and other believers (John 15:1-8). Small Groups are a place where we do life together! We study the Word, share a meal, build friendships, pray with each other, serve together and have fun together!



39 small groups

**372**

people in small groups

**2**  
**Equip**



**2**  
**Nourish**

**Preaching Seminar** by Mike Raiter

**Overview of the Book of Genesis** by David Kummerow

**Galatians** by Steven Daly

**How to Talk to Your Children About Sex & Gender** by Ps. Chin Wee Ang

"Let your light shine before others, that they may see your good deeds and glorify your Father in heaven." Matthew 5:16



## Subi Kids

- 103** avg number of kids who attend Subi Kids on weekends
- 46** avg number of kids who attend AWANA on Tuesday evenings
- 165** avg number of kids who attend each day of the Kids Holiday Club
- 87** number of adult volunteers currently serving in kids ministry
- 14** number of volunteers needed for vacancies in the roster, 6 leaders & 8 assistants

## Subi Youth

- 55** avg number of highschoolers who attend Subi Youth on Friday
- 19** avg number of Year 7-9s who attend Growth Groups during the services
- 44** number of highschoolers who attended Youth Camp in Jan 2024
- 15** number of leaders who currently volunteer within the Youth ministry
- ↑** more leaders needed who have a heart for discipling our youth

## Subi Young Adults

- 46** young adults in Small Groups
- 84** young adults at State Youth Games



launched monthly YA lunches

## Subi Seniors

- 29** avg number of Seniors who attend monthly Fellowship
- 12** avg number of seniors who attend fortnightly small group

## Subi Women

We are grateful to God for the faithful service of Debbie Mayne, our Women's Ministry Leader until September 2023. Debbie laid important foundations for strong Word-based women's ministry. Linda Lee and Esther Ong were commissioned to co-lead the ministry in February 2024. They serve alongside a team of 4 women.

- 3** Women's ministry events
- 70** average number of attendees at each event
- 30** attendees at the 6-week Bible study series

## Subi Men

There have been so many friendships formed and strengthened, so many men taught, counselled and encouraged in their faith, and so much personal growth through time spent in prayer, Bible reading and fellowship.

'Man looks at the outward appearance but God looks on the heart'. 1 Samuel 16:7b

- 2** Bonfire events
- 15** average number of attendees at monthly men's events



You are ... God's special possession, that you may declare the praises of Him who called you out of darkness into His wonderful light.

1 Peter 2:9

Chinese Church

20

avg weekly attendance

9 baptisms in 2023/24

Community Christmas Lunch

84

guests attended

Cafe Melody

45

avg monthly attendance

Street Evangelism

2000+

people reading our gospel tracts

Wandana

35

avg monthly attendance

Community Coffee Morning

55

avg monthly attendance

English Class

11

avg weekly attendance

Art Seeds

22

avg monthly attendance

Christianity Explained

47

participants

6

First Steps Discipleship Sessions

# Serving

**382** people actively volunteering

**40+** ministry teams / volunteer areas

## Number of volunteers in some ministry areas

- 87 Kids Ministry volunteers
- 63 Communion prep & helpers
- 59 Worship Team
- 35 Greeters
- 28 Cafe
- 20 Prayer Ministry
- 20 Community Christmas Lunch
- 18 Community Coffee Morning
- 15 Youth Ministry
- 10 Wandana
- 14 Catering for events
- 9 Deacons
- 8 Service Coordinators
- 8 Cafe Melody
- 8 English Class
- 7 Elders
- 6 Senior's Ministry
- 4 Women's Ministry
- 4 ArtSeeds
- + many more

We would like to acknowledge the amazing contribution our volunteers have made. Volunteers are the backbone of every ministry/event. Please know that we could not do this without your hard work. We are forever grateful for the time you have given and the blessing that you are.

# Prayer

**52** weeks of Weekend Prayer Sessions, approx 2 hours per week

**20** approx number of people attending Weekend Prayer Sessions

**20** people on roster for prayer after all 3 worship services

**20** approx number of people who attended each Prayer Walk

Monthly prayer guide used by individuals and small groups

Hour of Prayer held within small groups

“And pray in the Spirit on all occasions with all kinds of prayers and requests. With this in mind, be alert and always keep on praying for all the Lord's people. Ephesians 6:18

**1** MINISTRY INTERN 

**2** SUBI FUTURES SPONSORSHIPS 

**9** DEACONS APPOINTED  **NEW INCREASE**

**10** STAFF FULL TIME EQUIVALENT  **NEW INCREASE**

# Missions

**\$106,392**

amount spent on Worldwide & Local Missions in FY 2023/24

## Local Missions

- Christ Living Church 基督活水堂
- Churches of Christ WA
- City Bible Forum
- Fresh Start
- Kids Hope
- Overseas Christian Fellowship
- Power to Change
- Spero Ministries
- Local Subi Outreach

## Worldwide Missions





# Financial Stewardship

Jesus calls us to seek first His kingdom (Matthew 6:19-34) and give cheerfully and generously to His church. When you do this you make it possible to 'bring in and build up disciples in increasing number'.

## Subi Church - Financial Summary

	NOTE	ACTUAL 2023/24	BUDGET 2023/24	BUDGET 2024/25
<b>INCOMING RESOURCES</b>				
Offerings	1	1,182,846	1,224,000	1,598,872
Special Appeals		27,960	24,360	24,360
Other Income	2	101,375	91,500	78,500
Gain on Investments	3	11,802	0	0
<b>TOTAL INCOME</b>		<b>1,323,983</b>	<b>1,339,860</b>	<b>1,701,732</b>
<b>RESOURCES EXPENDED</b>				
<b>Ministries</b>				
Subi Kids/Awana/Kids Club		23,382	23,300	24,300
Youth		11,457	8,000	9,000
Communications		8,516	12,000	12,000
Worship		8,857	11,600	13,000
Connect		15,671	14,800	14,800
Church Events		34,384	40,000	5,000
Evangelism		5,794	7,510	12,200
Playgroup		0	1,500	0
Young Adults		935	1,200	1,200
Mums & Bubs		6	1,000	0
Small Groups		453	1,400	1,400
Women's Ministry		2,569	3,000	3,500
Men's Ministry		730	1,500	2,500
Equip		1,912	700	700
Nourish		252	0	0
International Students		0	350	0
Other Ministries		17,079	17,220	5,000
<b>Administration</b>				
Wages		93,969	136,720	108,820
Missions	4	177,427	183,600	239,831
Insurance		60,475	53,980	61,977
Buildings		57,226	84,500	84,500
Internship		0	0	2,000
Capital Expenses		0	50,000	50,000
<b>TOTAL EXPENSES</b>	<sup>e</sup>	<b>1,257,230</b>	<b>1,523,880</b>	<b>1,701,727</b>
<b>CASH RESERVES</b>		<b>66,752</b>	<b>-184,020</b>	<b>4</b>

This Financial Summary is extracted from the Audited Accounts as at 30 June 2024. Full audited financial statements are available to any member who requests one.

### Notes:

1. Income budget has been risen in faith to cover increased costs.
2. Other income includes funds received from bank interest, building use, rental income and other income received from events.
3. The Church Investment Policy is under review.
4. Missions (worldwide and local) allocation is 15% of our offerings. This meets all our financial support obligations to all our missionaries. \$76,828 was unspent last FY, and has been rolled over into spending for this FY.
5. This summary does not include the Depreciation of \$7,549.09 for Subi Church for FYE 2024.

## Subi Education Centre - Financial Summary

	NOTE	ACTUAL 2023/24	BUDGET 2023/24	BUDGET 2024/25
<b>INCOMING RESOURCES</b>				
Gifts to SEC	1	212,668	100,000	120,000
Bank Interest		14,106		
<b>TOTAL INCOME</b>		<b>226,774</b>	<b>100,000</b>	<b>120,000</b>
<b>RESOURCES EXPENDED</b>				
Subi Education expenses	2	43,731	95,350	95,000
<b>TOTAL EXPENSES</b>		<b>43,731</b>	<b>95,350</b>	<b>95,000</b>
<b>CASH RESERVES</b>		<b>183,043</b>	<b>4,650</b>	<b>25,000</b>

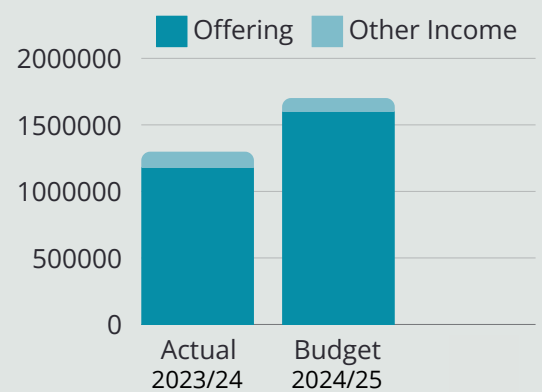
### Notes:

1. Gifts given to Subi Education Centre are tax-deductible. Ongoing funds are used to maintain the SEC building.
2. Expenses includes general building maintenance, servicing, cleaning, security, insurance, etc.
3. Cash on hand as at 30 June 2024 for Subi Education Centre is \$315,107.
4. This summary does not include depreciation for SEC of \$113 371.

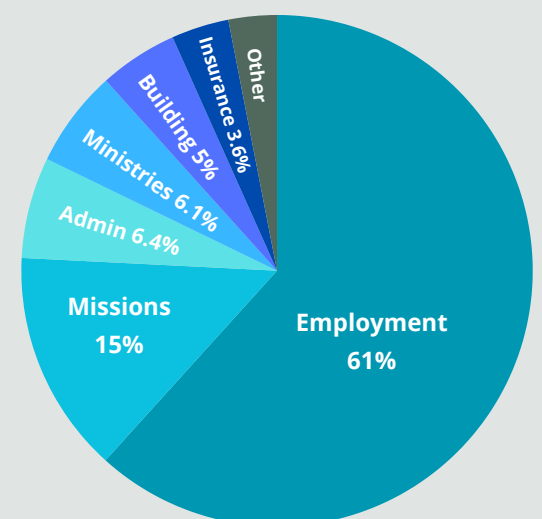
## Balance Sheet

ASSETS SUMMARY	2024
Cash & Cash Equivalents	2,478,709
Trade & Other Receivables	10,163
Property, Plant & Equipment	10,407,170
Investment (inc Forrest St unit)	622,583
<b>TOTAL ASSETS</b>	<b>13,518,604</b>
<b>TOTAL LIABILITIES</b>	<b>645,270</b>
<b>NET ASSETS</b>	<b>12,873,334</b>

## Operating Income



## Operating Expenditure Budget FY 2024/25





# Our Ministry team



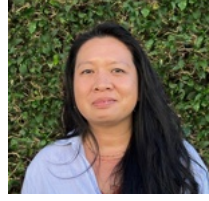
**Kenaina Adan**  
Service Director



**Vash Cunnoosaumi**  
Projects & Subi Kids  
Coordinator



**Braden Fildes**  
Associate Pastor - Small Groups,  
Subi Equip & Young Adults



**Pam Finch**  
Admin Assistant



**Ray Forlin**  
Executive Pastor



**David Graieg**  
Ministry Intern



**Abby Johnston**  
Youth Growth Groups  
& Subi Kids Rostering



**Carson Johnston**  
Youth Director



**Tracey Johnston**  
Connect Ministry  
Director



**Linda Lee**  
Women's Ministry  
Leader



**Airen Mulligan**  
Connect Ministry  
Director



**Shani Nel**  
Executive Assistant  
& Connect Ministry



**Esther Ong**  
Women's Ministry  
Leader



**Susan Richards**  
Evangelism Director



**David Skirling**  
Senior Pastor



**Amanda Tan**  
Executive Director



**Melanie Tan**  
Kids Ministry  
Director



**Christina Wong**  
Finance Director

## Elders



**Osvaldo Almeida**



**Stuart Beattie**



**Michael Keong**



**Grant Korn**



**Sean Kum**  
Chair



**Ric Leaver**



**Wayne Luce**

## Deacons



**Robyn Brown**  
Pastoral Care



**Andrew Chua**  
Missions



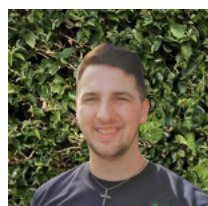
**Rod Cousins**  
Missions



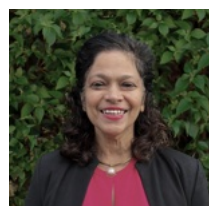
**Rob Falls**  
Facilities



**Rochelle Ledger**  
Service Coordinating



**Cameron Macormic**  
Evangelism



**Shirani Rasiah**  
Prayer



**Patricia Tan**  
Hospitality



**Nathan Yap**  
Finance &  
Subi Futures